

ARAZI
THE CUSTOM RUGS

ESSENTIAL LINES COLLECTION

ARAZI

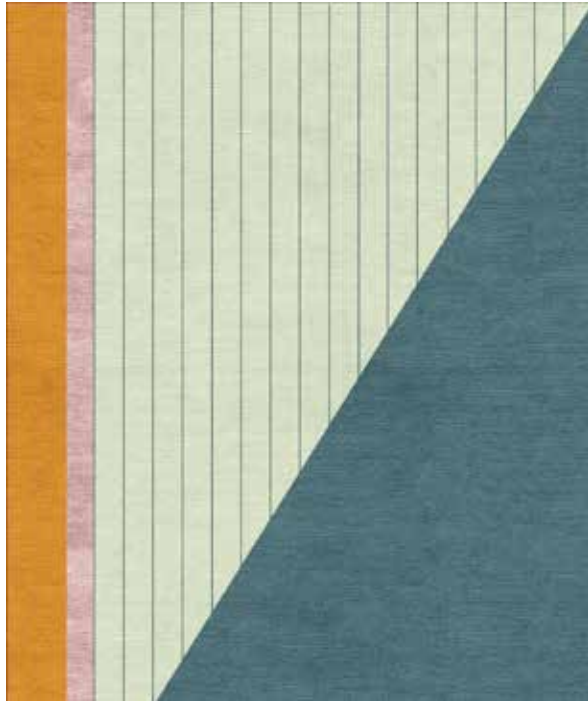
La Collezione Essential Lines, si sviluppa e si realizza dopo mesi di ricerca progettuale nutrita di viaggi, di contaminazioni con l'arte contemporanea e con la fotografia. Nasce dalla collaborazione con l'Architetto Raffaella Procaccia, che ha lavorato sulle suggestioni derivate dal disegno geometrico e dai colori dello stile degli anni '40 e '50, reinterprelandoli in un gioco di tagli visuali e prospettive con colori più attuali e freschi. Ogni tappeto nasce per avere più possibilità di customizzazione per forma, disegno e colori, per dare vita a una collezione che si adatti perfettamente ad ogni ambientazione contemporanea.

The new Essential Lines Collection, develops and is realized after months of design research, nourished by travels, contaminations with contemporary art and photography. Born from the collaboration with the architect Raffaella Procaccia, who worked on the suggestions derived from the geometric design and the colors of the style of the '40s and '50s, reinterpreting them in a game of visual cuts and perspectives with more current and fresh colors. Each rug is designed to have more possibilities for customization in terms of shape, design and colors, to create a collection that adapts perfectly to any contemporary setting.

ARAZI

Essential Lines Collection





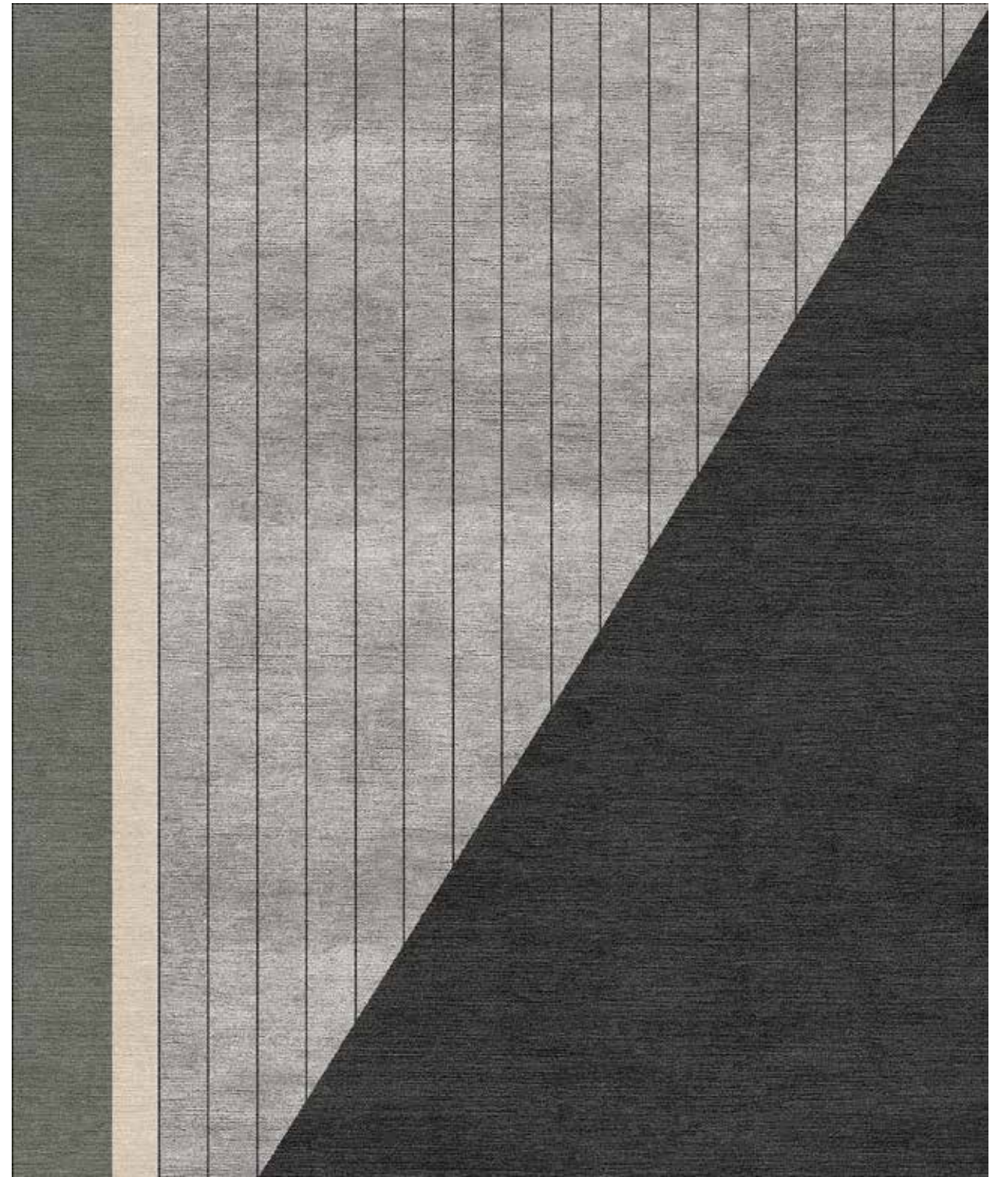
01 A



01 D



01 C



01 B

ESSENTIAL LINES
LUXURY HANDMADE RUGS



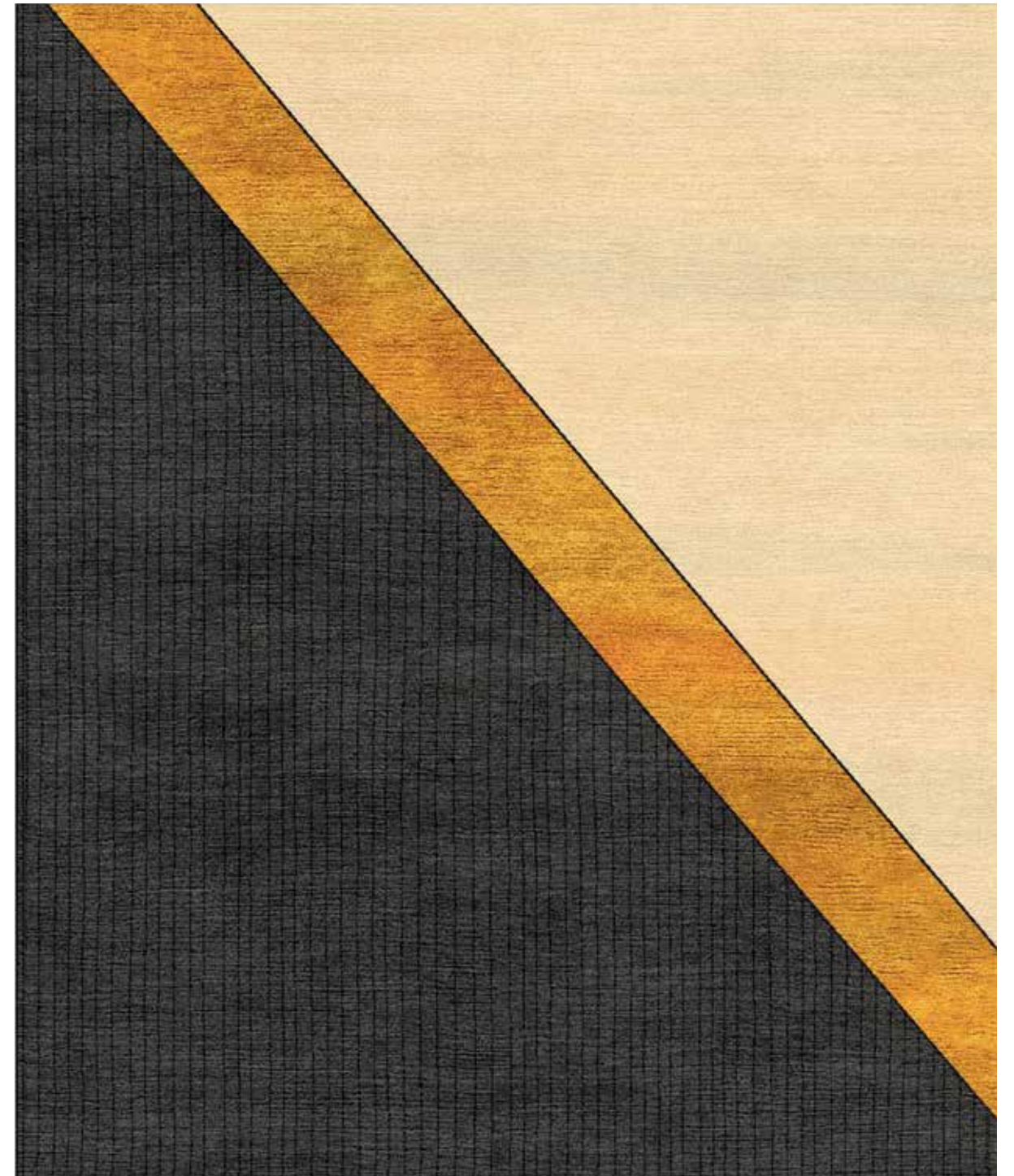


02 B



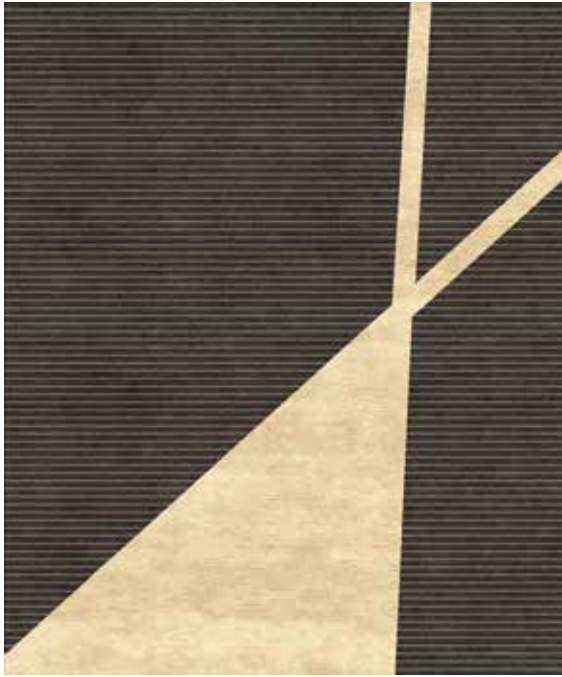
02 C

ESSENTIAL LINES
LUXURY HANDMADE RUGS

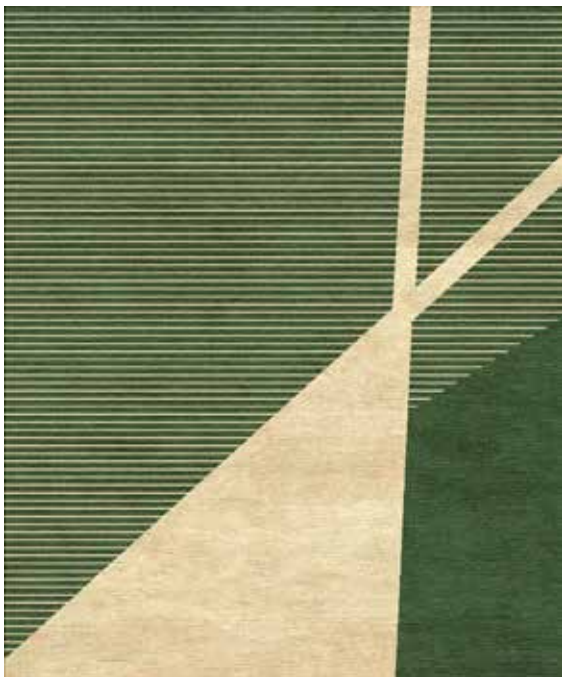


02 A

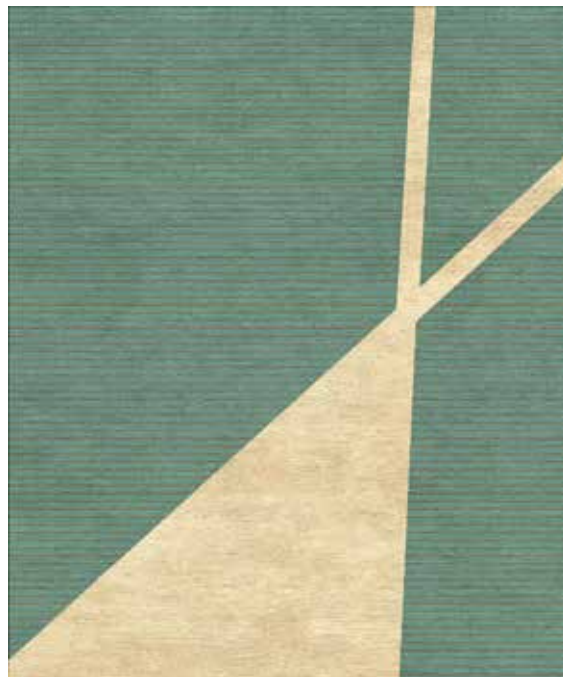




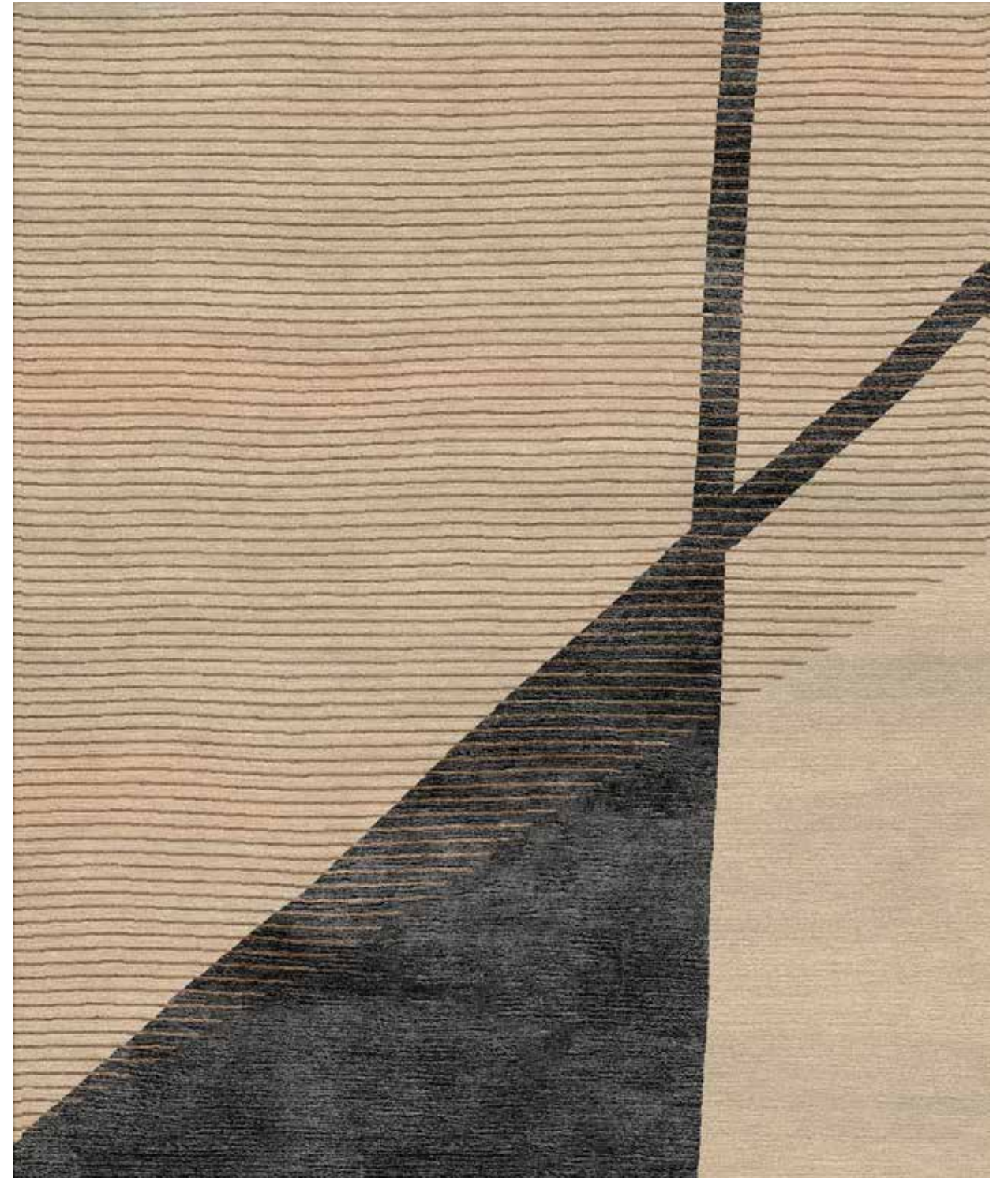
04 B



04 D



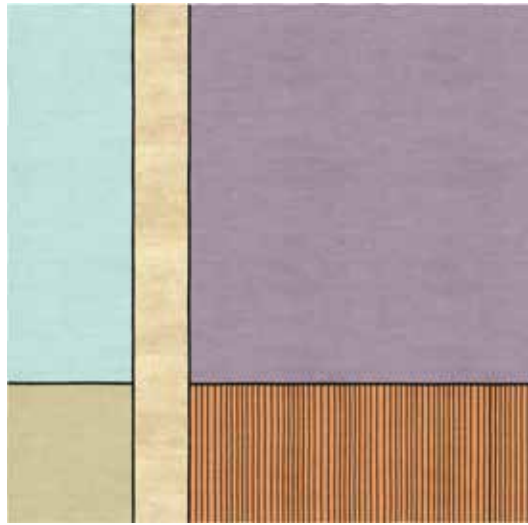
04 C



04 E

ESSENTIAL LINES
LUXURY HANDMADE RUGS





03 B

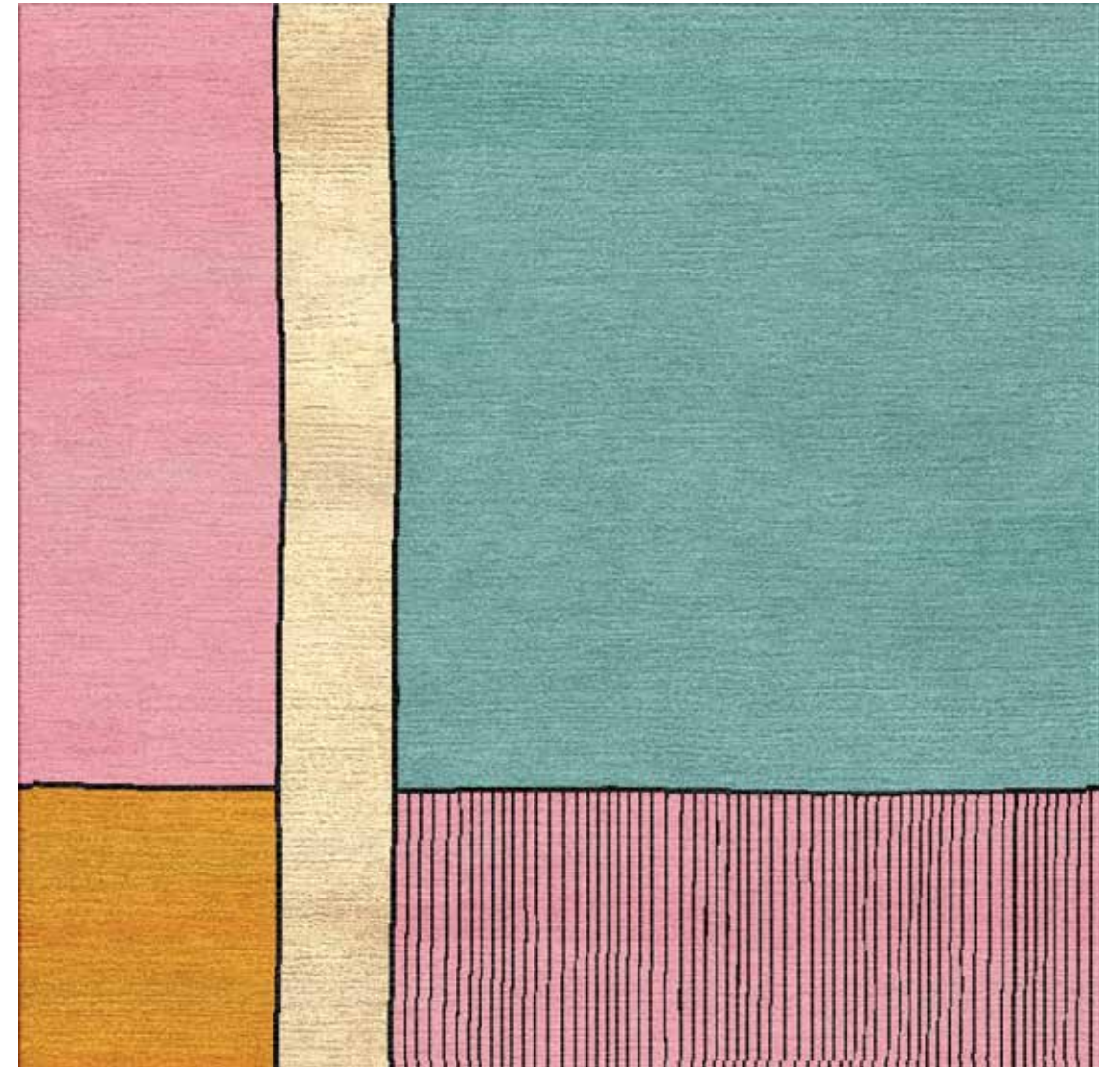


03 D



03 C

ESSENTIAL LINES
LUXURY HANDMADE RUGS

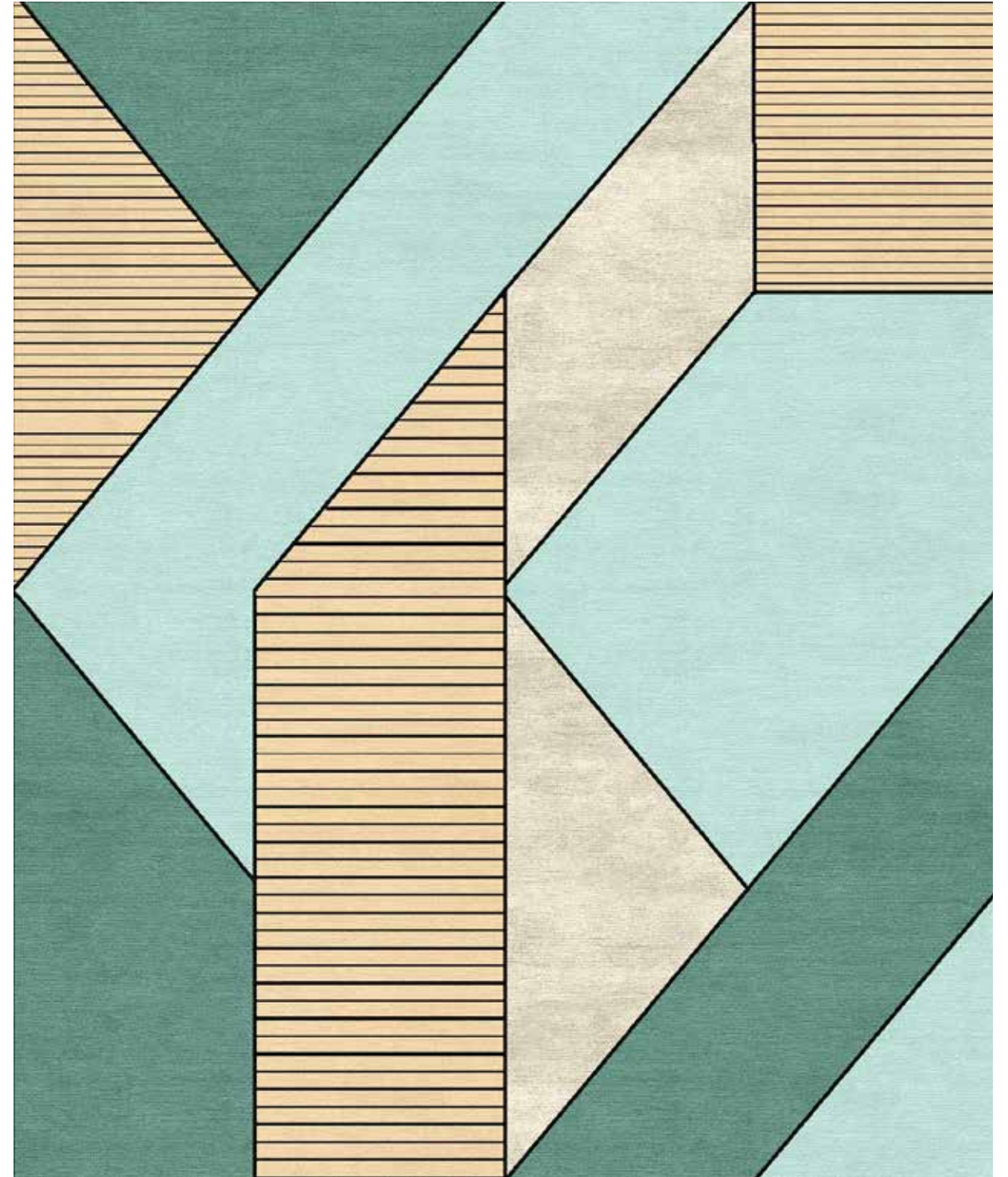


03 A





05 A



05 B

ESSENTIAL LINES
LUXURY HANDMADE RUGS

